

MYO/OJM AUDITIONS : TUBA

Mahler – Symphony No. 2

ff

ff

ff

Immer noch drängend

sempre cresc.

ff

Più mosso molto accel.

7

9 Ziemlich bewegt

Wieder zurückhaltend (1.2. u. 3. Pos.)

2 10 (♩ = wie früher ♩) Wieder sehr breit

G. P. pp

Etwas ener-

p

gischer im Tempo

cresc.

rit. 11 Wieder breit

1

p f ff p

MYO/OJM AUDITIONS : TUBA

Stravinsky – Petrushka

Bär und ein Mann, die Schalmei blasend

Igor Strawinsky

(100) Sostenuto (♩ = 72)

2 Tb. Solo

ff [quasi a piena voce]

dim. pp

Detailed description: This block contains two staves of music for Tuba Solo. The first staff starts with a 2/4 time signature and a key signature of two flats (B-flat and E-flat). The tempo is Sostenuto with a quarter note equal to 72 beats per minute. The music begins with a whole note rest, followed by a series of eighth and sixteenth notes with accents. The dynamic marking is fortissimo (ff) with the instruction 'quasi a piena voce'. The second staff continues the melodic line, featuring a decrescendo (dim.) leading to pianissimo (pp) dynamics.

Die Masken

(121) Più mosso

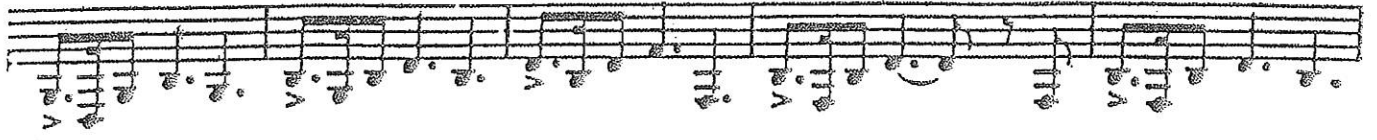
f risoluto

2

Detailed description: This block contains two staves of music for Tuba Solo. The first staff starts with a 2/4 time signature and a key signature of two flats. The tempo is Più mosso. The music begins with a whole note rest, followed by a series of eighth notes with accents. The dynamic marking is fortissimo (f) with the instruction 'risoluto'. The second staff continues the rhythmic pattern, ending with a double bar line and a fermata. A '2' is written above the final measure of the second staff.

MYO/OJM AUDITIONS : TUBA

Wagner – Die Walküre



MYO/OJM AUDITIONS : TUBA

Tchaikovsky – Symphony No. 4

Movement I

Allegro con anima

337

341

345

349

3 U 10 V 16

ff

Movement IV

IV. FINALE

Allegro con fuoco

1

3

21 A 3

ff

35

1

ff

42

48

5